

Symbolism in The Movie “Divergent”: Peirce’s Semiotic Analysis of The Faction’s Symbols

Nabila Balqis^{1*}, Laili Etika Rahmawati²

¹Department of Communication Science, Faculty of Communication and Informatics,
Universitas Muhammadiyah Surakarta. Indonesia

²Department of Indonesian Language Education and Literature, Faculty of Education and Educational Science,
Universitas Muhammadiyah Surakarta. Indonesia

* Corresponding author:

Email: nbbalqis04@gmail.com

Abstract.

This study examines the symbolism of faction symbols in the movie Divergent through the semiotic perspective of Charles Sanders Peirce. The research focuses on how the symbols representing the five factions—Abnegation, Dauntless, Erudite, Amity, and Candor—serve as visual signs that convey social identity and ideological values within the dystopian society portrayed in the film. This study applies a qualitative descriptive method using Peirce’s semiotic framework, which explores the relationship between representamen, object, and interpretant, as well as the classification of signs into icons, indexes, and symbols. The findings indicate that each faction symbol reflects distinct moral values: Abnegation symbolizes humility and self-sacrifice, Dauntless represents bravery and resilience, Erudite signifies intelligence and rational thinking, Amity embodies peace and harmony, and Candor reflects honesty and justice. The analysis further demonstrates that these symbols mainly function as symbolic signs, although some also contain iconic and indexical characteristics. In addition to serving as visual identifiers, the faction symbols operate as ideological instruments that strengthen social divisions, shape collective identity, and support mechanisms of social control within the dystopian social system. Overall, this study highlights that symbolism in Divergent plays a significant role in constructing meaning, identity, and ideology, while illustrating how visual symbols in film function as a medium for communicating social and ideological messages to audiences.

Keywords: Charles Sanders Peirce, Divergent, Faction Symbols, Film Studies, Semiotic Analysis, Symbolism.

I. INTRODUCTION

In modern society, films serve not only as a form of entertainment but also as a medium that represents and shapes social values, cultural identities, and ideological perspectives (Kartini, 2022). Through the visual narratives they present, films convey meanings that influence how audiences understand social structures, moral values, and power dynamics within society (Suryani, W & Djakaria, 2025). As an audiovisual medium, film combines narrative, dialogue, and symbolic representation to convey messages that often go beyond the surface meaning of the story. One key element in this process is the use of visual symbols, which can represent deeper meanings related to identity, ideology, and social norms (Mariza et al., 2025). Therefore, the study of symbols in film is essential for understanding how meaning is constructed and communicated to the audience.

Among the various film genres that have emerged, the dystopian genre has become particularly popular, especially among younger generations, as it frequently portrays societies governed by strict social systems and strong ideological control. Dystopian films generally explore themes such as identity, conformity, social stratification, and resistance against dominant power structures. These themes are often represented through visual symbols that serve not only as narrative elements but also as tools for constructing meaning and reinforcing specific ideological values (Haryani, 2023). Through such symbolic representations, dystopian films can serve as a medium for critical reflection on various contemporary social issues while encouraging audiences to question the systems that govern individual behavior and collective identity.

One film that exemplifies this is “Divergent” (2014), a dystopian science fiction film adapted from the popular novel by Veronica Roth. The film garnered widespread global attention through its depiction of a society divided into five factions: Abnegation, Dauntless, Erudite, Amity, and Candor. Each faction is represented through distinctive visual symbols that reflect the core values they uphold while also serving as

markers of social identity for their members. These faction symbols function not merely as decorative visual elements but also play a crucial role in shaping the ideological structure of the society depicted in the film (Karman & Arifianto, 2021). According to Storey (2018), from Gramsci's hegemonic perspective, the dominant ideology is disseminated and maintained through symbols, norms, and cultural representations that encourage individuals to accept the prevailing social structure. Through the repeated use of symbols in costumes, environments, and social practices, the film reinforces intergroup boundaries, directs individual behavior, and legitimizes the social order within that dystopian society.

Although the film "Divergent" has been the subject of numerous studies, most previous research has focused primarily on character development, narrative conflict, and broader ideological issues, such as social class divisions and power relations. Studies that specifically examine faction symbols as visual markers that play a role in shaping collective identity and supporting mechanisms of social control remain relatively limited. Furthermore, research employing Charles Sanders Peirce's semiotic approach to analyze these symbols has also been scarce. Consequently, the symbolic function of faction emblems in constructing meaning and ideology within the film's dystopian social structure has not been thoroughly explored.

This study aims to fill this gap by analyzing factional symbols in the film "Divergent" through Charles Sanders Peirce's semiotic approach, which emphasizes the relationship between the representamen, the object, and the interpretant, as well as the classification of signs into icons, indices, and symbols. This theoretical approach was chosen because it provides a systematic understanding of how visual signs convey meaning and how that meaning is interpreted within a specific social context. Unlike approaches that focus more on revealing hidden myths or deconstructing ideology in general, Peirce's semiotic framework allows for a more detailed analysis of how symbols function as part of a sign system that shapes social identity and ideology.

This research is significant because visual symbols in popular films exert an increasingly significant influence on how audiences, particularly the younger generation, understand identity, morality, and systems of authority in social life. By analyzing how the faction symbols in "Divergent" function as ideological tools, this study aims to provide a deeper understanding of the relationship between visual representation and meaning-making in film. Furthermore, this study is also expected to enrich semiotic studies in the field of communication by demonstrating that symbols function not only as visual signifiers but also as mechanisms that construct meaning, reinforce group identity, and maintain social order within cinematic narratives.

II. METHODS

This study adopts a qualitative descriptive approach with Charles Sanders Peirce's semiotic analysis as its main analytical framework. A qualitative approach is chosen because this research emphasizes the interpretation of meanings rather than the calculation of numerical data. Qualitative research aims to understand social phenomena through meaning, context, and cultural representation (Creswell, 2014).

The focus of this study is to examine how faction symbols in the film "Divergent" operate as visual signs that represent social identity and ideological values within a dystopian society. By employing Peirce's semiotic theory, this research seeks to explain how these symbols communicate concepts related to identity formation, social hierarchy, moral principles, and ideological control. The descriptive nature of the research allows the findings to be presented systematically based on the meanings embedded in the film's visual elements.

III. RESULT AND DISCUSSION

Overview of The Movie "Divergent"

This chapter presents the findings and discussion of the research on symbolism in the film "Divergent". The analysis concentrates on the faction symbols that reflect identity and ideological values within the dystopian society portrayed in the film. By applying Charles Sanders Peirce's semiotic framework, which includes Representamen, Object, and Interpretant, this study explores how meanings are constructed through visual symbols and how these symbols operate within the broader social structure of the narrative.

The dystopian society depicted in “Divergent” is organized through a strict faction-based system consisting of five groups: Abnegation, Dauntless, Erudite, Amity, and Candor. Each individual is required to choose one faction, which ultimately shapes their social role, personal identity, and way of life. Although this system is intended to preserve social order and prevent conflict, it also restricts individual freedom and creates clear social hierarchies, especially for those who fail the initiation process and become factionless (Claeys, 2017). The enforcement of social order is further strengthened through the continuous use of faction symbols, regulations, clothing, and environmental settings that reinforce the core values of each group.

In this context, symbols function not only as markers of visual identity but also as instruments that influence behavior, establish boundaries between groups, and sustain ideological control. Individuals identified as Divergent are viewed as threats because they challenge the system’s emphasis on conformity and obedience. Therefore, this chapter examines the symbols of each faction to understand how they construct social meaning, shape collective identity, and serve as ideological tools that maintain division and control within the dystopian society represented in the film.

Analysis of The Abnegation Faction’s Symbols

The Abnegation faction symbol is depicted as two hands clasped together. This visual design is presented simply, without excessive ornamentation, in keeping with the Abnegation faction’s emphasis on self-sacrifice and humility. The symbol reflects an attitude that prioritizes the interests of others over personal interests, which is the guiding principle in the lives of this faction’s members.

In the film, the Abnegation symbol is further reinforced by the dominant use of gray in their clothing and living environments. These simple, unobtrusive colors underscore the symbol’s meaning as a representation of a humble life—one that does not seek the spotlight and distances itself from selfishness. Additionally, the gesture of interlocking hands symbolizes solidarity, social compassion, and dedication to others.



Pict. 1&2. Abnegation faction’s symbol (two hands clasped together), their costume, and their role in society.

Representamen, Object, and Interpretant

The symbol of the Abnegation faction is represented by an image of two hands clasped together, featuring a simple design without any striking ornamentation. This symbolism is reinforced by the predominance of gray in the costumes, surroundings, and accessories worn by Abnegation members. Visually, these elements reflect simplicity, humility, and self-sacrifice that defining the characteristics of the faction. The gesture of clasped hands symbolizes service and care for others, while the use of simple colors signifies Abnegation members’ rejection of personal ambition and the pursuit of self-recognition.

From a Peirce’s semiotic perspective, the interpretant of this symbol positions Abnegation as a group identity grounded in the values of altruism and dedication to the common good. The repeated appearance of this symbol in the film reinforces the ideology that Abnegation members are expected to prioritize the community’s interests over personal desires. Therefore, the symbol functions not only as a visual identity but also as an ideological tool that supports morality and social stability within the dystopian society depicted in the film.

Classification of Signs

In Charles Sanders Peirce’s semiotic analysis, the symbol of the Abnegation faction can be understood as a predominantly symbolic sign, although it also contains iconic elements in its visual form. As

a symbolic sign, the meaning of the Abnegation symbol is constructed through social conventions within the faction system in the film “Divergent”. The image of two clasped hands is associated with self-sacrifice, humility, and devotion to others, making the relationship between the sign and its meaning arbitrary in accordance with Peirce’s concept of symbolic signs (Danesi, 2016). On the other hand, the symbol also possesses iconic elements because the gesture of clasped hands visually resembles an act of prayer or humility, thereby creating a direct resemblance between the sign and what it represents. Therefore, the Abnegation symbol can be classified as a predominantly symbolic sign that not only functions as a visual identity but also reinforces the formation of values and character within the dystopian social structure depicted in the film.

Contextual Meaning Analysis

The symbol of the Abnegation faction in the film “Divergent” serves as a marker of social identity that affirms core values, such as self-sacrifice, simplicity, humility, and concern for others. This symbol represents moral values that prioritize the collective good over individual interests, thereby shaping the behavior of its members to always be oriented toward serving the community. Within the context of the dystopian society’s social structure, this symbol also carries ideological significance as a means of legitimizing power. Abnegation is deemed worthy of governing because it is perceived as having no personal interests, making it more objective and trustworthy as a guardian of social moral values. Thus, this symbol not only reflects ethical values but also plays a role in reinforcing the social order and serves as a control mechanism that guides individuals to align with prevailing collective values.

Analysis of The Dauntless Faction’s Symbols

The symbol of the Dauntless faction in the film “Divergent” is depicted as a blazing flame. The visual representation of the flame is bold and dynamic, reflecting the character of the Dauntless faction, which is synonymous with courage, strength, and a spirit of taking risks. Visually, the flame symbolizes energy, courage, and resilience core values embraced by Dauntless faction members. This symbol reinforces the expectation that Dauntless members must overcome fear and bravely face various challenges.

In the film, the flame symbol is further emphasized through the use of dark colors, such as black in their attire, and the harsh, challenging environment of the Dauntless faction. Furthermore, the activities undertaken by Dauntless members, such as jumping off a moving train, further underscore the meaning of the fire symbol as a representation of courage and resilience. This risk-filled environment demonstrates that the value of courage is not merely displayed through symbols but is also applied in the daily lives of the faction’s members.



Pict. 3 & 4. Dauntless faction’s symbol (blazing flame), their costume, and their role in society.

Representamen, Object, and Interpretant

The Dauntless faction is symbolized by a blazing flame with bold and dynamic lines. This symbol appears in various visual elements such as tattoos, logos, and the faction’s distinctive environment, and is reinforced by the dominance of dark colors (especially black) in the member’s costumes and settings. Visually, these elements reflect the strength, courage, and energy that define the Dauntless faction in the film. The flame symbolizes courage, resilience, and determination in the face of danger and fear. This values reflected through the extreme activities undertaken by Dauntless members, such as intense physical training and fear simulations.

From a Peirce's semiotic perspective, the interpretant of the flame symbol positions Dauntless as a group identity centered on the values of courage and self-reliance. The repeated appearance of this symbol in the film reinforces the view that Dauntless members are expected to overcome fear, take risks, and protect society within the depicted dystopian social structure. Therefore, the symbol functions not only as a visual identity but also as an ideological tool that shapes the behavior and character of faction members in accordance with the values they uphold.

Classification of Signs

In Charles Sanders Peirce's semiotic analysis, the symbol of the Dauntless faction can be understood as a predominantly symbolic sign, although it also contains indexical and iconic elements in its visual form. The flame symbol represents courage, strength, and resilience, whose meanings are shaped through social conventions within the faction system in the film "Divergent". Although fire is not always inherently associated with courage, within the context of the film this symbol is consistently used to portray bravery and a willingness to take risks, making it a symbolic sign according to Peirce. In addition, the symbol also carries indexical meaning because fire is naturally connected to heat, energy, and danger, further reinforcing the image of Dauntless as a strong faction unafraid of facing risks. On the other hand, the flame symbol also contains iconic elements because its visual form resembles a real flame, thereby creating a direct resemblance to the energy and strength it represents (Thellefsen & Friedman, 2023). Therefore, the Dauntless symbol functions not only as a visual identity but also as a medium for reinforcing values and shaping the character of its members within the dystopian social structure depicted in the film.

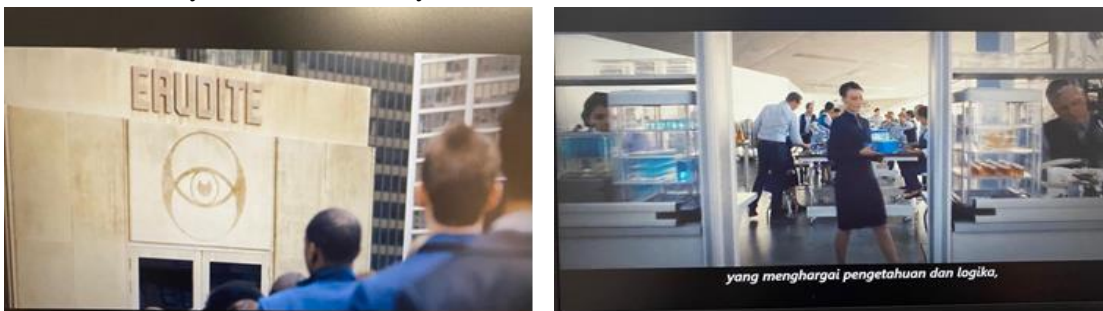
Contextual Meaning Analysis

The symbol of the Dauntless faction in the film "Divergent" serves as a marker of identity while also reflecting its core moral values, such as courage, strength, and a willingness to take risks. The flame symbol represents the character of Dauntless members, who are expected to remain courageous in all kinds of extreme situations, thereby fostering a resilient, aggressive, and fearless attitude. Within the social structure of the dystopian society, this symbol is also linked to the Dauntless's role as security protectors tasked with confronting various threats. Therefore, the flame symbol not only represents individual character but also reflects the faction's social function in maintaining the system's stability. Additionally, this symbol serves as a tool for social control, shaping members' identities and behaviors to align with the faction's ideology of courage.

Analysis of The Erudite Faction's Symbols

The symbol of the Erudite faction in the film "Divergent" is depicted as an open eye. This symbol represents observation, knowledge, and intellectual awareness the core values of the Erudite faction. Visually, the eye symbolizes the ability to see, understand, and analyze information rationally. This aligns with the Erudite faction's character, which values intelligence, logic, and the pursuit of knowledge as the foundation for decision-making.

In the film, the eye symbol is further emphasized by the dominance of the color blue in the Erudite faction's clothing and environment. The color blue is often associated with rational thinking, calmness, and intellectuality. Additionally, Erudite members are depicted wearing neat attire, working in technology filled environments, and prioritizing logic based discussions. These elements further emphasize that the eye symbol serves not only as a visual identity but also reflects the intellectual character of the Erudite faction.



Pict. 5 & 6. Erudite faction's symbol (open eye), their costume, and their role in society.

Representamen, Object, and Interpretant

The Erudite faction is symbolized by an open eye that appears in various visual elements, such as the logo, accessories, and the faction's distinctive environment. This symbolism is reinforced by the predominance of blue in the uniforms and settings of Erudite members. Visually, the open eye symbolizes the process of observation and understanding, while the color blue reflects rationality, calmness, and intellectuality. These elements underscore the Erudite faction's core values, such as intelligence, knowledge, and logical thinking which are also reflected in the lives of its members, who prioritize research, technology, and analytical thinking.

From a Peirce's semiotic perspective, the interpretant of the eye symbol positions Erudite as a group identity centered on rationality and intellectualism. The repeated appearance of this symbol in the film reinforces the idea that the Erudite serves as the intellectual center of the dystopian society, where knowledge and logic form the basis of power and decision-making. Therefore, the symbol functions not only as a visual identity but also as an ideological tool that shapes the mindset and behavior of faction members in accordance with the intellectual values they uphold.

Classification of Signs

In Charles Sanders Peirce's semiotic analysis, the symbol of the Erudite faction in the film "Divergent" can be understood as a predominantly symbolic sign, although it also contains iconic elements in its visual form. The eye symbol represents intelligence, knowledge, and rationality, whose meanings are constructed through social conventions within the faction system. Although the eye does not naturally symbolize intellect, in the context of the film it is consistently used to depict Erudite characters who emphasize logic and scientific thinking, making it a symbolic sign according to Peirce (Danesi, 2016). In addition, the symbol also has iconic qualities because its shape resembles a real human eye, directly relating to the acts of seeing, observing, and understanding. Therefore, the Erudite symbol functions not only as a visual identity but also as a representation of intellectual values within the dystopian social structure depicted in the film.

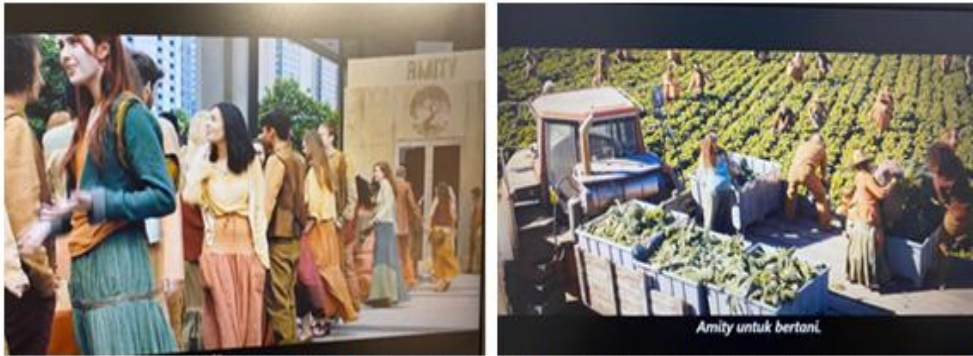
Contextual Meaning Analysis

The symbol of the Erudite faction in the film "Divergent" serves as a marker of identity while also representing its core moral values, such as intelligence, knowledge, rationality, and the ability to think analytically. The eye symbol depicts the capacity to observe, understand, and process information logically, which is reflected in the Erudite faction's emphasis on science, technology, and the application of logic in daily life. Within the social structure of the dystopian society, this symbol is also linked to the Erudite faction's position as a group with the ambition to lead through mastery of science and technology. The eye symbol represents a broader perspective as the foundation for gaining influence and power within the social system. Additionally, this symbol serves as a tool for social control that instills values of rationality, thereby shaping the mindset and behavior of its members to remain aligned with the intellectual ideology embraced by the Erudite faction.

Analysis of The Amity Faction's Symbols

The symbol of the Amity faction in the film "Divergent" is depicted as a tree with lush branches and leaves. This symbol represents the values of peace, harmony, and togetherness, which are the core principles of the Amity faction. Visually, the tree symbolizes life, growth, and balance with nature. This aligns with the Amity faction's character, which prioritizes harmonious social relationships, avoids conflict, and maintains a peaceful atmosphere in community life.

In the film, the tree symbol is further emphasized through the use of warm colors like red and yellow in Amity members' clothing, as well as an environment dominated by farmlands and a rural atmosphere. Amity members are depicted working together in the fields, sharing food, and forming close social bonds. These elements further emphasize that the tree symbol serves not only as a visual identity but also reflects a lifestyle that emphasizes togetherness, simplicity, and peace.



Pict. 7 & 8. Amity faction's symbol (a tree with lush branches and leaves), their costume, and their role in society.

Representamen, Object, and Interpretant

The Amity faction is symbolized by an image of a tree with lush branches and leaves, which appears in various visual elements such as logos, emblems, and the faction's living environment. This symbolism is reinforced by the use of warm colors, such as red and yellow, as well as depictions of vast agricultural areas and environments close to nature. Visually, the tree symbolizes life, harmony, and togetherness, reflecting the Amity faction's core values of peace, balance, and social unity. These values are also evident in the lives of its members, who prioritize cooperation, mutual support, maintaining close social bonds, and avoiding conflict.

From a Peirce's semiotic perspective, the interpretant of the tree symbol positions Amity as a group identity centered on peace and social harmony. The repeated appearance of this symbol in the film reinforces the idea that Amity plays a role in maintaining social stability within the depicted dystopian society. Therefore, the symbol functions not only as a visual identity but also as an ideological tool that shapes the behavior of faction members in accordance with the values of harmony and peaceful coexistence they uphold.

Classification of Signs

In Charles Sanders Peirce's semiotic analysis, the symbol of the Amity faction in the film "Divergent" can be understood as a predominantly symbolic sign, although it also contains iconic elements in its visual form. The tree symbol represents peace, harmony, and unity, whose meanings are formed through social conventions within the faction system. Although a tree does not inherently symbolize these values, in the context of the dystopian society in the film it is consistently used to signify a peaceful life and harmonious social relations as the defining characteristics of Amity. Therefore, the relationship between the sign and its meaning is conventional, classifying it as a symbolic sign according to Peirce (Chandler, 2017). In addition, the symbol also has iconic qualities because its shape resembles a real tree, directly relating to the concepts of life, growth, and harmony with nature. The image of a tree conveys a sense of tranquility and togetherness, further reinforcing the values of peace upheld by the Amity faction. Although the symbol visually resembles a real tree and therefore contains iconic elements, the values of peace, harmony, and unity that it represents do not originate from the tree's inherent characteristics. Rather, these meanings are constructed through social conventions within the faction system, making the Amity symbol more appropriately classified as a predominantly symbolic sign rather than an iconic one. Thus, the Amity symbol functions not only as a visual identity but also as a representation of peace within the dystopian social structure, with a dominant symbolic nature while still containing iconic elements.

Contextual Meaning Analysis

The Amity faction symbol in the film "Divergent" functions as both an identity marker and a representation of key moral values, such as peace, harmony, cooperation, and social balance. The tree symbol reflects a peaceful way of life, growth, and harmonious social relationships, which can be seen in the Amity members' daily activities of living in mutual cooperation, working together in agriculture, and avoiding conflict. Within the social structure of the dystopian society, this symbol is also connected to Amity's role in maintaining social stability through a peaceful and non-conflict-oriented approach. The tree

symbol represents the continuity of life and social balance that support the creation of harmony within society. In addition, the symbol also functions as a means of social control that instills values of peace, thereby shaping members' behavior to remain aligned with the ideology of harmony embraced by the Amity faction.

Analysis of The Candor Faction's Symbols

The symbol of the Candor faction in the film "Divergent" is depicted as a set of scales in a state of balance. This symbol represents the values of honesty, justice, and openness, which are the core principles of the Candor faction. Visually, the scales symbolize balance, objectivity, and fair judgment without bias. This aligns with the Candor faction's character, which upholds truth and transparency in social life.

In the film, the scales symbol is further reinforced through the use of black and white in the Candor members' attire, symbolizing the clarity between right and wrong. Candor members are depicted as speaking directly, openly, and without hiding the truth, even though this sometimes leads to conflict. Additionally, the Candor faction is associated with the role of law enforcers or those tasked with determining the truth, further emphasizing the meaning of justice and objectivity they uphold.



Pict. 9. Candor faction's symbol (a set of scales in a state of balance), their costume, and their role in society.

Representamen, Object, and Interpretant

The Candor faction is symbolized by an image of balanced scales, which appears in various visual elements such as the logo, emblem, and the faction's distinctive environment. This symbolism is reinforced by the use of black and white in the members' uniforms, representing a clear distinction between right and wrong. Visually, the scales symbolize objectivity, justice, and impartiality, reflecting the Candor faction's core values of honesty, openness, and justice. These values are also evident in the behavior of Candor members, who are depicted as speaking directly, openly, and committed to conveying the truth.

From a Peirce's semiotic perspective, the interpretant of the scales symbol positions Candor as a group identity centered on the values of honesty and justice. The repeated appearance of this symbol in the film reinforces the idea that Candor serves as a guardian of truth and justice within the depicted dystopian society. Therefore, the symbol functions not only as a visual identity but also as an ideological tool that shapes the behavior of faction members in accordance with the values of objectivity and transparency they uphold.

Classification of Signs

In Charles Sanders Peirce's semiotic analysis, the symbol of the Candor faction in the film "Divergent" can be categorized as a predominantly symbolic sign, although it also contains iconic elements in its visual form. The scales symbol represents honesty, justice, and objectivity within the faction's social system. Although scales do not inherently symbolize honesty, in the context of the dystopian society in the film the symbol is consistently associated with Candor's commitment to truth and openness (Claeys, 2017). Therefore, the relationship between the sign and its meaning is conventional, classifying it as a symbolic sign according to Peirce's classification. In addition, the symbol also has iconic qualities because its form resembles real scales, directly representing fair and balanced judgment. This resemblance helps clarify the meaning of the symbol for the audience while reinforcing the faction's value of honesty. Thus, the Candor

symbol functions not only as a visual identity but also as a representation of honesty and justice within the dystopian social structure, with a dominant symbolic character while still containing iconic elements.

Contextual Meaning Analysis

The Candor faction symbol in the film “Divergent” functions as both an identity marker and a representation of key moral values, such as honesty, justice, objectivity, and truth. The scales symbol illustrates the concept of balance and fair judgment, which is reflected in the behavior of Candor members who consistently speak truthfully, openly, and without concealing facts, even though this may lead to debate or conflict. Within the social structure of the dystopian society, this symbol is also connected to Candor’s role in the legal system and the pursuit of truth. The scales symbol represents a fair and impartial judgment process, thereby strengthening Candor’s position as the guardian of justice within society. In addition, the symbol also functions as a means of social control that instills values of honesty and objectivity, shaping members’ behavior to remain consistently grounded in truth in their social life.

IV. CONCLUSION

Based on Charles Sanders Peirce’s semiotic perspective, the faction symbols in the film “Divergent” function not only as visual markers of identity, but also as representations of ideological values within the dystopian society portrayed in the story. Each faction symbol reflects particular moral values and social functions, such as selflessness in Abnegation, bravery in Dauntless, intellectualism in Erudite, harmony in Amity, and honesty in Candor. Through the relationship between representamen, object, and interpretant, these symbols generate social meaning while strengthening the collective identity of each faction.

The study also shows that the faction symbols are primarily categorized as symbolic signs because their meanings are established through social conventions within the faction system. However, several symbols also demonstrate iconic and indexical characteristics through their visual resemblance and contextual meaning. The continuous appearance of these symbols in costumes, settings, and social interactions reinforces ideological values and encourages individuals to conform to the norms maintained by their respective factions.

In addition, the research reveals that the faction symbols in “Divergent” function as mechanisms of social control within the dystopian social structure. These symbols strengthen social boundaries, shape patterns of behavior, and preserve the ideological system within society. Therefore, symbolism in the film operates not merely as a visual and narrative component, but also as a medium for communicating moral values, identity, and ideology to the audience. Through Peirce’s semiotic approach, this study demonstrates how visual symbols in film contribute to the construction of meaning and influence audience perceptions of social structure and authority.

V. ACKNOWLEDGMENTS

The author would like to express deep gratitude to Allah SWT for His blessings and guidance throughout the completion of this research. Sincere appreciation is also extended to the academic supervisors for their invaluable guidance, constructive suggestions, and continuous support during the entire research process. The author would also like to thank the Department of Communication Science, Faculty of Communication and Informatics, Universitas Muhammadiyah Surakarta, for providing academic assistance and facilities that supported the completion of this study. Finally, the author is sincerely grateful to family and friends for their encouragement and moral support throughout this research journey.

REFERENCES

- [1]. Chandler, D. (2017). *Semiotics: The Basics* (3rd Editio). Routledge.
- [2]. Claey's, G. (2017). *Dystopia : A Natural History*. Oxford University Press.
- [3]. Creswell, J. W. (2014). *Research Design: Qualitative, Quantitative, and Mixed Methods Approaches*.
- [4]. Danesi, M. (2016). The Semiotics of Emoji: The Rise of Visual Language in the Age of the Internet. *The Semiotics of Emoji: The Rise of Visual Language in the Age of the Internet*, 5(4), 1–200.

<https://doi.org/10.17645/mac.v5i4.1041>

- [5]. Haryani, H. (2023). Semiotic Studies On Film: Reading Hidden Messages. *Vegueta. Anuario de La Facultad de Geografia e Historia*, 23(1), 440–446. <https://doi.org/10.5281/zenodo.7544878>
- [6]. Karman & Arifianto, S. (2021). Representasi Nasionalisme Mikro Di Media Sosial: Persoalan Bagi Indonesia Sebagai “Imagined Community” Representation of Micro Nationalism in Social Media: a Problem for Indonesia As “Imagined Community.” *Jurnal Penelitian Komunikasi*, 24(1), 15–28. <https://doi.org/10.20422/jpk.v24i1.758>
- [7]. Kartini, K. . D. I. F. . & J. K. (2022). “Representasi Pesan Moral Dalam Film Penyalin Cahaya (Analisis Semiotika Charles Sanders Peirce).” *SIWAYANG Journal: Publikasi Ilmiah Bidang Pariwisata, Kebudayaan, Dan Antropologi*, 1(3), 121–130.
- [8]. Mariza, K., Irwanto, I., & Hariatiningsih, L. R. (2025). Representasi Pesan Moral Pada Film Rumah Masa Depan. *Jurnal Media Penyiaran*, 4(2), 8–15. <https://doi.org/10.31294/jmp.v4i2.7483>
- [9]. Storey, J. (2018). Cultural theory and popular culture: An introduction: Eighth edition. In *Cultural Theory and Popular Culture: An Introduction: Eighth Edition*. <https://doi.org/10.4324/9781315226866>
- [10]. Suryani, W & Djakaria, L. B. (2025). The Role Of Mass Media In Shaping Public Opinion. 7, 54–63.
- [11]. Thellefsen, M., & Friedman, A. (2023). Icons and metaphors in visual communication : The relevance of Peirce ’ s theory of iconicity for the analysis of visual communication. 10(2), 1–15.